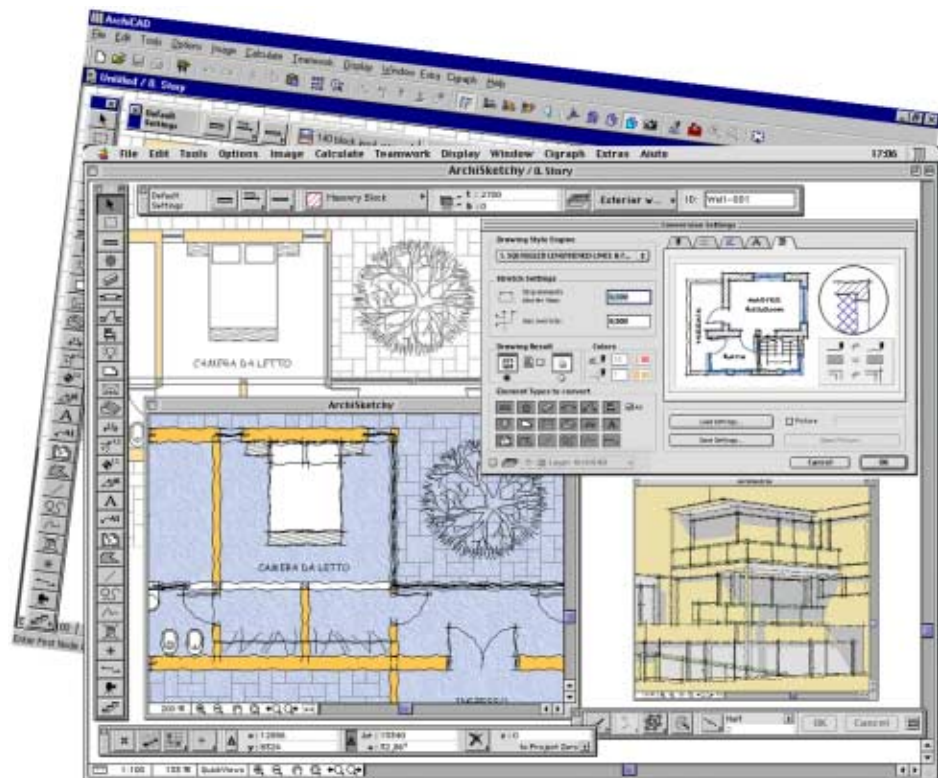


ArchiSketchy™

Hand Drawn Effects for ArchiCAD® drawings



ArchiSketchy™

Hand Drawn Effects for ArchiCAD® drawings

Manufacturer and Distributor: Cigraph S.r.l.

Description

ArchiSketchy is a new extension that uses API technology to add new functions to ArchiCAD. This Plug-In was designed to allow ArchiCAD users to transform regular computer drawn projects into warmer hand drawn style designs. The road is open to creativity, with the possibility to elaborate and personalize your project in a style that resembles hand drawn designs done with a pencil and pen, but without the smudges or imperfections.

Working method

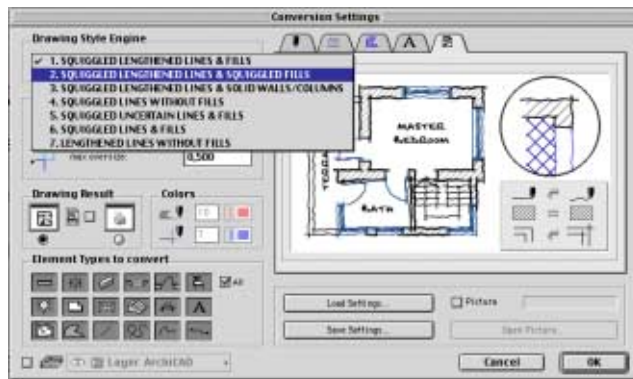
ArchiSketchy is very easy to use, simply select the drawing to be transformed (whether it is from the plan, Section/Elevation window, or 3D) and choose, from the ArchiSketchy menu, the type of transformation desired.

In the dialogue window of ArchiSketchy, there is the possibility of choosing between seven different transformation styles, where the pens, lines, fills and text of each of these transformations can be personalised by the user.

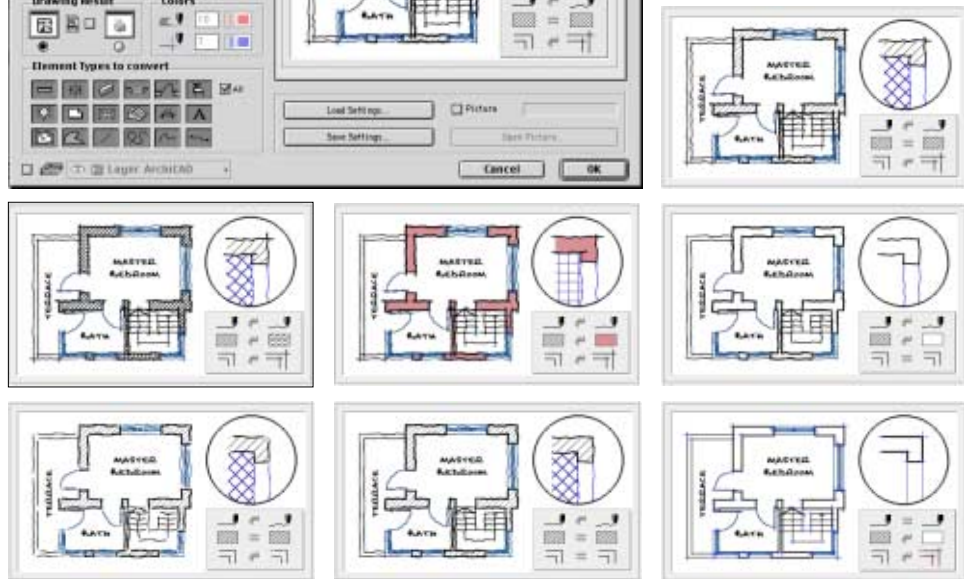
In addition, there is the possibility of choosing which element types to convert, the minimum size of the transformed lines and the layer on which the elaborated drawing will be positioned, as well as a series of settings that once personalized, can be saved and recalled at any time.

To make ArchiSketchy even more unique and personalized, the user can add a background texture similar to the grain of various paper.

Once the type of transformation has been set, the drawing can be stored in the window of origin or in an independent window where it can be either printed or saved in PMK format.



For further control of the elaborated drawing, the design can be transformed into an object so that it can be changed in size or used in different projects. It is important to remember that ArchiSketchy elaborated drawings are vectorial and can be re-modified at any time.



Configuration

The ArchiSketchy configuration is determined by the configuration requested on ArchiCAD. To know the most recently updated configuration visit the Cigraph web site: www.cigraph.com.

Cigraph S.r.l.

Via Orsato, 38-30175 Ve/Marghera -Tel. +39 041 932 388 - Fax +39 041 920 031
Internet: www.cigraph.com - e-mail: home@cigraph.com



