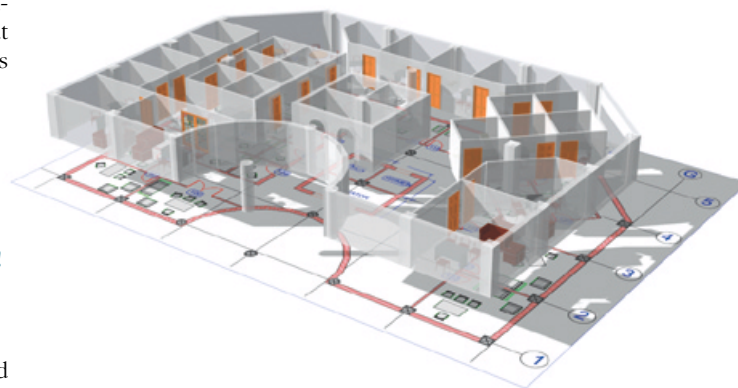


Plan2Model

Convert your 2D floor plan drawings into a 3D ArchiCAD model from DXF and DWG files or imported sketches and drawings!

Plan2Model provides architects the power to turn your 2D floor plans into 3D ArchiCAD models quickly and effectively. With this ArchiCAD 7.0 add-on, representations of 2D elements on floor plans can be converted to objects in an ArchiCAD model automatically and/or semi-automatically. Use source data in any file format 2D floor plan, such as DXF and DWG files or imported sketches and drawings processed by raster-to-vector conversion software. The simple vector entities – *lines, polylines, arcs, and circles* that make up 2D floor plans are converted by **Plan2Model** into a full ArchiCAD intelligent building model containing *walls, columns, windows, doors, beams and other objects*.



Change your floor Plans 2 Models with a click of your mouse!

Convert 2D Legacy Work Efficiently

There is a large gap between vector data provided by AutoCAD and other 2D drafting systems' 2D-drawings and ArchiCAD building model's objects. In ArchiCAD, the building blocks are not simple geometrical primitives like lines, polylines, arcs and circles but are 'construction elements' - walls, windows, doors and the like.

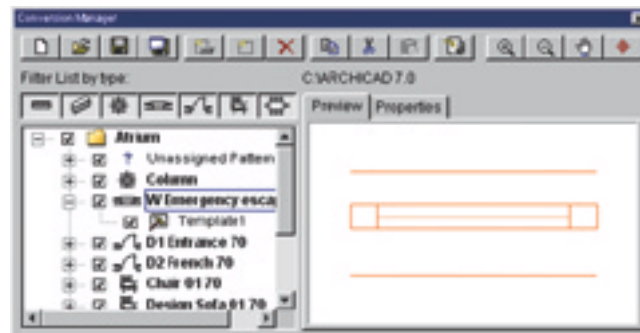
Plan2Model bridges this gap making integration of your archive drawings to ArchiCAD quick and easy. The one-click conversion eliminates the lengthy process of manual data entry, multiplying your efficiency in this phase.

Also take full advantage of Plan2Model's capabilities for converting your scanned drawings. Plan2Model also supports vector data created by raster-to-vector conversion software. To create an ArchiCAD model from this kind of source data without **Plan2Model** would take the same time and effort as to create a model from scratch.

A great number of Architects have awaited a productivity tool like Plan2Model that imports 2D drawing floor plans into ArchiCAD.

Don't Let Existing Documentation Limit Your Work

In most cases the documentation of an existing building is likely to come as plain 2D drawings. **Plan2Model** is not only the right tool to convert your own archive data into a Virtual Building, but it's also the tool of choice when designing refurbishment or interiors, or providing data for facility management purposes. Architectural services like these can clearly benefit from the seamless transition from lines to intelligent building elements Plan2Model can provide.



Plan2Model

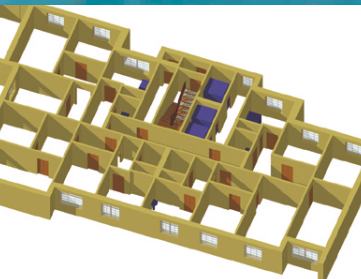
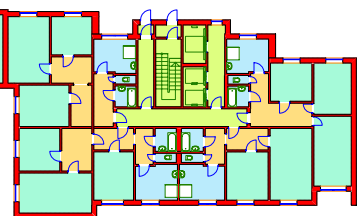
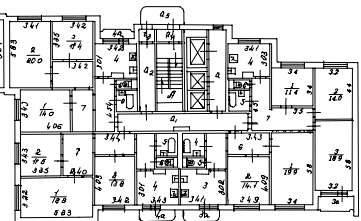


Plan2Model in action

The conversion of 2D-drawings into 3D-models is based on the unique recognition algorithms of arbitrary objects by drawing patterns so regardless of whether drawings were created in AutoCAD or any 2D CAD system, Plan2Model can convert them.

Simple entities of a plan drawing are converted into ArchiCAD objects using the Mapping Library. It uniquely establishes the correspondence between an arbitrary ArchiCAD object and one or more drawing patterns on the source drawing. Once created, the Mapping Library can be used to process a set of similar plans.

Powered by a very effective recognition algorithm, floor plans can be converted automatically in just few minutes. Depending on floor plan quality, the user may need to use interactive mode of **Plan2Model** to complete the full conversion.



Plan2Model is the first application available in the market for 3D building model creation directly from 2D floor plan drawings.

Main features of Plan2Model

- Automatic and semi-automatic conversion of 2D floor plans into ArchiCAD models;
- Conversion of simple vector entities – lines, polylines, arcs, and circles into unique building objects – walls, columns, windows, doors, etc.;
- Converts source 2D CAD graphics data of any kind that can be processed by ArchiCAD, e.g. DXF/DWG files, raster-to-vector conversion files, sketches, etc.
- Unique recognition algorithms of arbitrary objects by drawing patterns;
- Recognition process fully controllable by the user;
- Two different recognition modes used for precise source data (CAD drawings) and imprecise source data (Vectorized drawings, sketches);
- Mapping Libraries adjustable to user requirements;
- Direct DXF/DWG blocks import to Mapping Library with automatic drawing patterns creation.

Bridge the gap between 2D AutoCAD drawings and ArchiCAD model with the Plan2Model!

System Requirements

- Microsoft Windows NT/2000/XP or Windows 95/98/ME
- Graphisoft ArchiCAD 7.0
- At least 20 MB of free hard disk space

